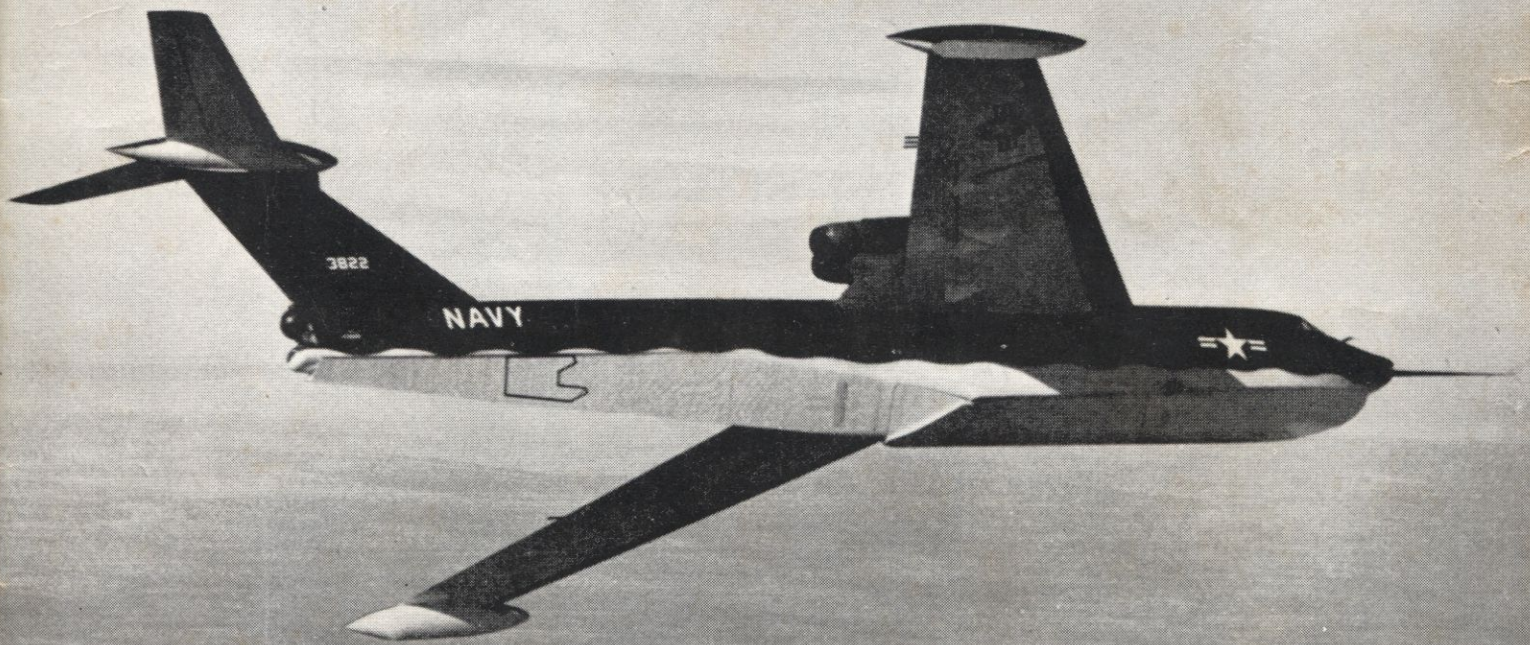


# AIR *Pictorial*

and AIR RESERVE GAZETTE

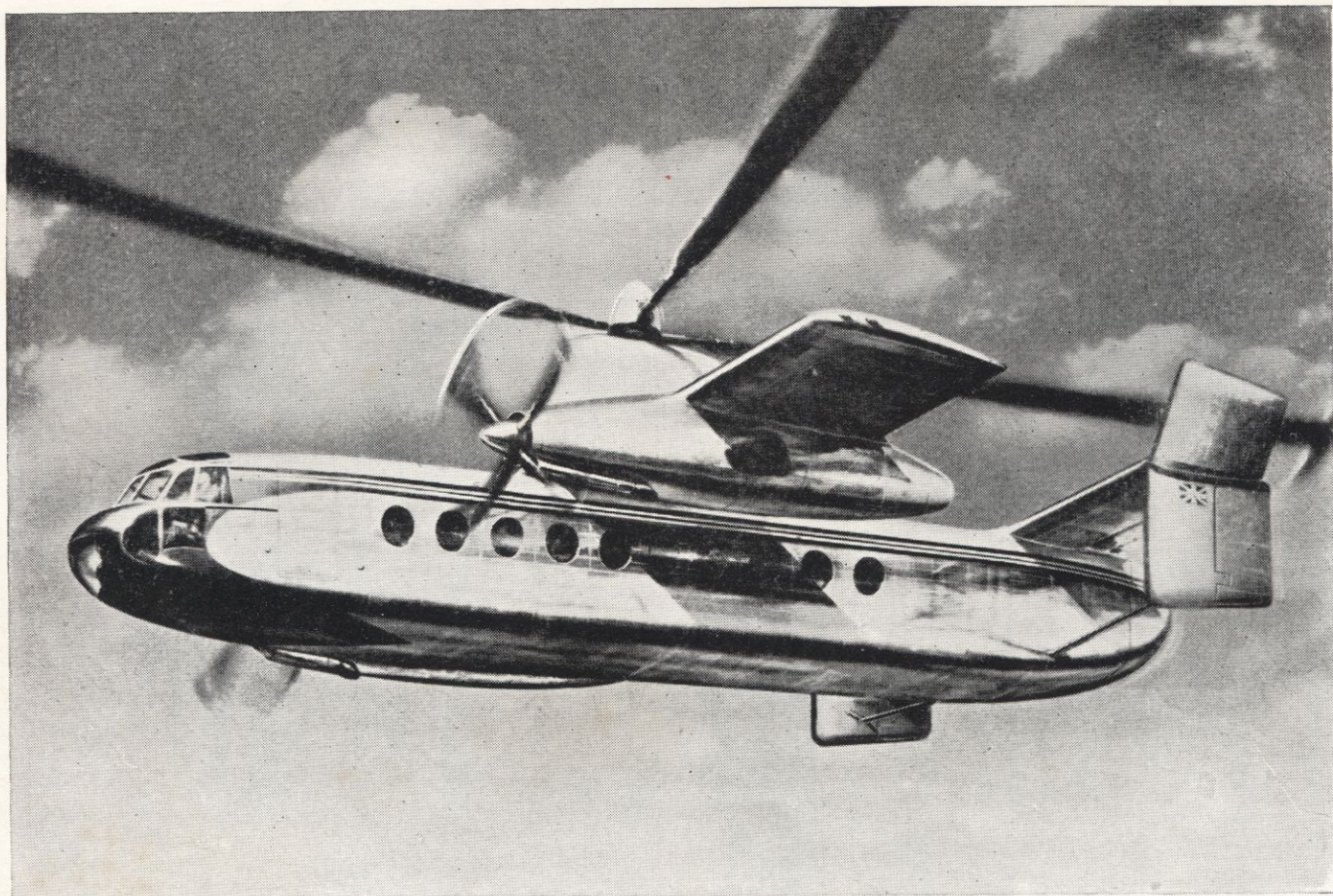
MARCH, 1958

The INTERNATIONAL AVIATION ENTHUSIASTS' Monthly



**1/6**  
Vol. XX No. 3





## Fairey flies the first Vertical Take-off Airliner

Adding achievement to achievement, Fairey Aviation have now built potentially the most important transport aeroplane in the world, the Fairey Rotodyne.

Carrying 48 passengers or  $4\frac{1}{2}$  tons of freight it takes off vertically as a helicopter and having gained height flies forward as a normal twin-engined airliner.

It is the most adaptable rotary-wing aircraft in the world and the first to offer operating economy directly comparable to that of fixed-wing aircraft over ranges of up to 400 miles.

The arrangement within the Rotodyne's capacious fuselage can readily be adapted to suit civil or military applications.

Powered by two Napier Eland propellor-turbines with Fairey Pressure-Jets at the rotor-tips for take-off and landing.

**FAIREY**

# *Rotodyne*

**48 passengers - 185 m.p.h. cruising speed  
400 miles maximum range.**

THE FAIREY AVIATION COMPANY LIMITED • HAYES • MIDDLESEX  
ENGLAND • AUSTRALIA • CANADA